



Importing Decks into Anki

Slovenian Language Class 2020



Importing an Anki Deck

Obtain the Anki Import file by going to: TwinCitiesSlovenians.org website and then clicking 'Language' link. Download the file of interest using your web browser. (Make sure you know where your file is going to be downloaded to – this can vary on each computer used.)

Example: Download the file for Lesson 1 -

Language x Slovenian Language x +

/TCS%20Main%20Site/language.html

ssota (5) Mn/DOT Traveler Inf: Radar Imagery - Envi: kuler morgueFile free pho 12 Google Calendar Bookmarks Online Course | eSlov Slovene Vocabulary |

(2018) Oct 18, Nov 8, Dec 6, (2019) Jan 24, Feb 28, Mar 28, and Apr 25.

For more information, contact John Zakelj at zakelj@cs.com

2018-2019 SLOVENIAN LANGUAGE STUDY GROUP - CLASS FILES

Anki Program Files

- [Microsoft PC \(Updated\)](#)
- [Apple Mac \(Updated\)](#)

2018-2019 Anki Decks

- [Lesson 1 - Slovenian Language Learning Online \(New\)](#)
- [Lesson 2 - Slovenian Language Learning Online \(Coming\)](#)

2017-2018 Anki Decks

- [1st set of 20 Nouns Anki Deck](#)
- [2nd set of 20 Nouns Anki Deck](#)
- [3rd set of 20 Nouns Anki Deck](#)
- [4th set of 20 Nouns Anki Deck](#)
- [5th set of 20 Nouns Anki Deck](#)
- [1st 12 Verbs Anki Deck](#)
- [1st 20 Nouns Documentation](#)
- [Full 625 Word Anki Deck](#)

Various Documents

- 625 Most Used Words [Alphabetized by Slovenian Word](#)
- 625 Most Used Words [Alphabetized by English Word](#)
- [Key for use of Most Used Words files](#)
- [Znaki v Sloveniji](#) (Signs in Slovenian)

Libraries

- Image files [_ \[PC\]](#) [\[Mac\]](#)



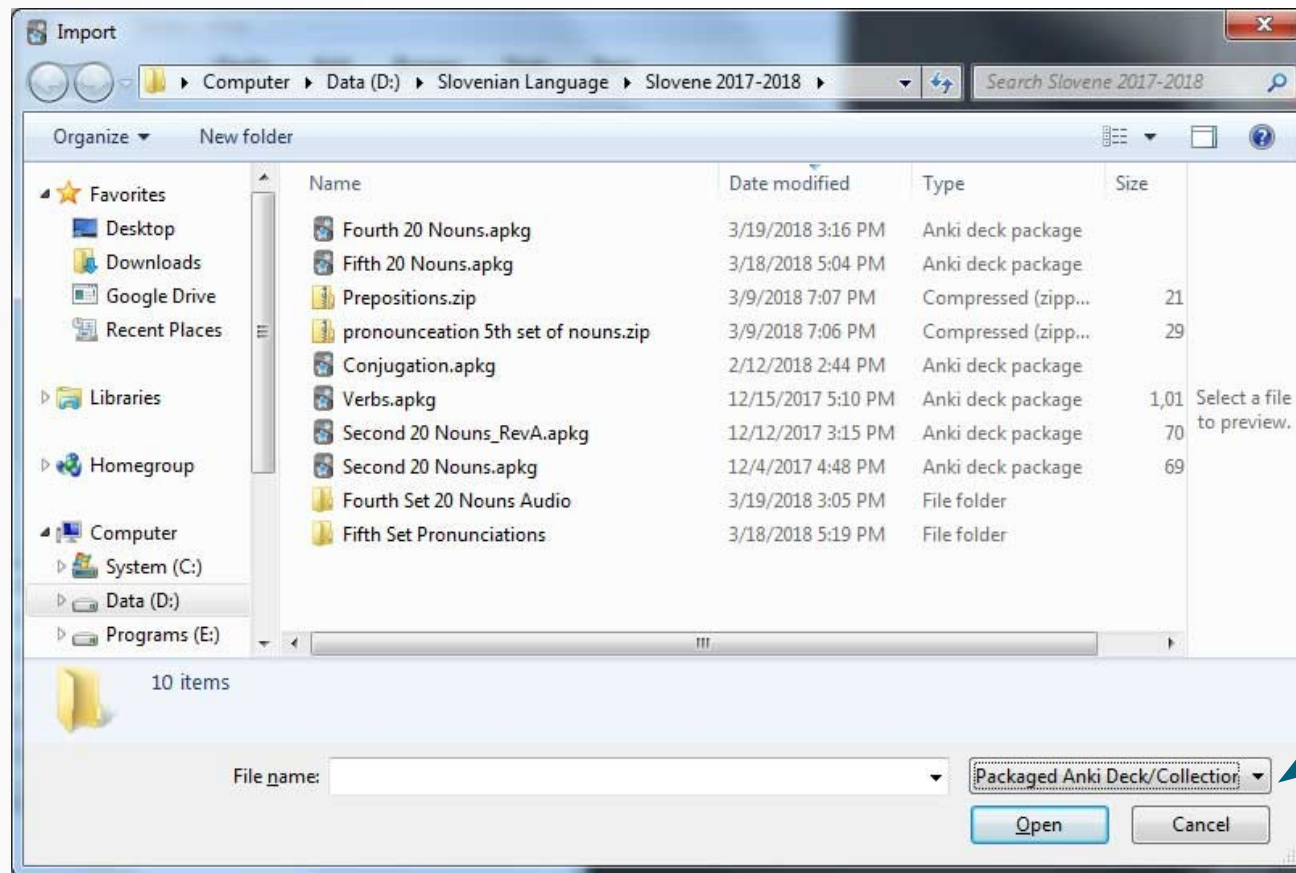
Anki Deck Importing Screen

Click on the 'Import' option in the 'File' pull-down menu.





Select File-type to be Imported

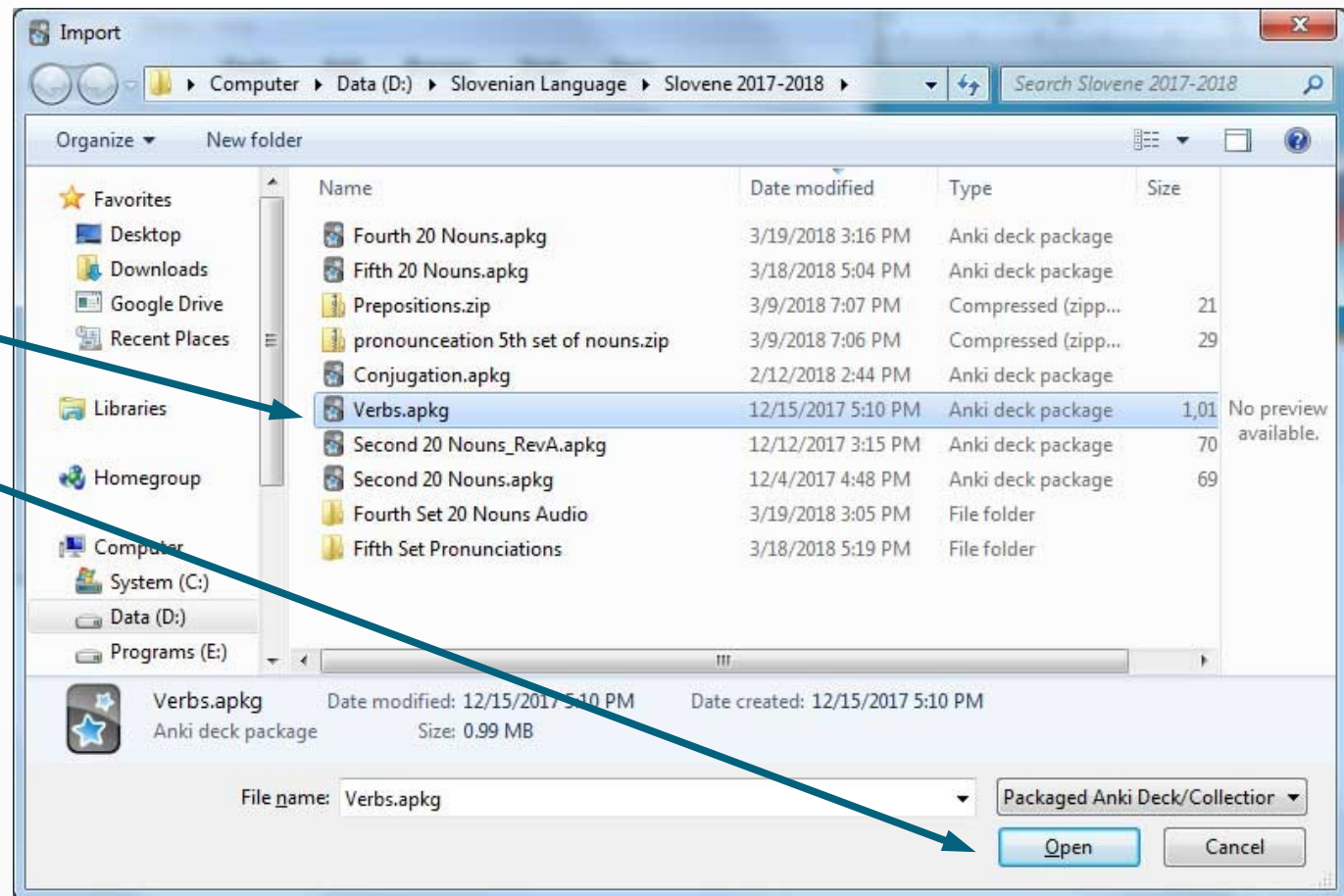


Select file type to be Imported - 'Packaged Anki Deck' in this case.



Select File to be Imported

Select the file that was downloaded from the website earlier and then click 'Open'.





Deck Imported Successfully!

Deck has been imported and there are 12 flashcards in that deck ready to be studied.

